

THRUVUE™ INFINITY GAS STRUT WINDOW

BUILD 3 SL ALUMINUM EXTERIOR/INTERIOR

Unit width: 60"

Unit height: 60"

R.O. width: 60½"

R.O. height: 60½"

Approved By:

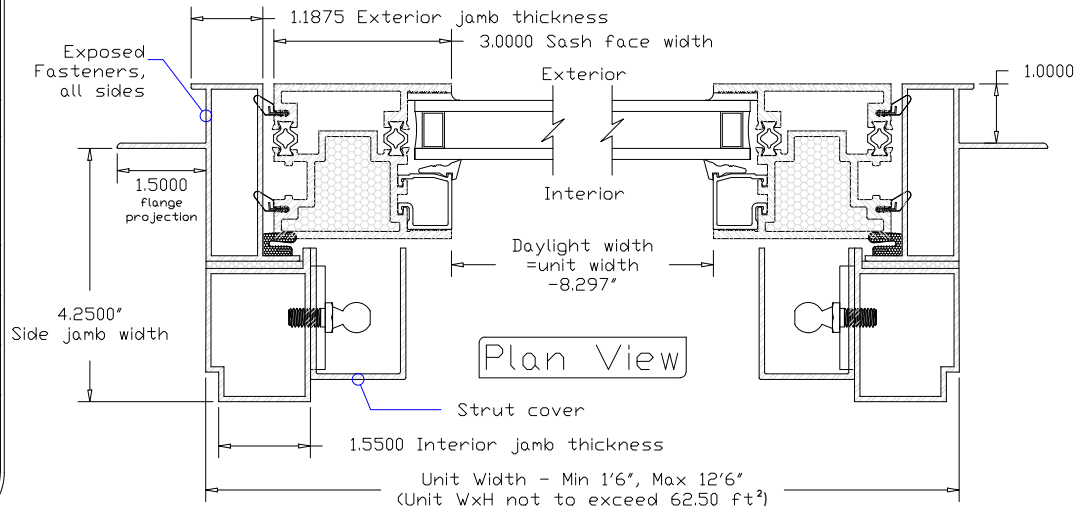
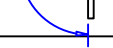
Date:

Window operation: Please note the end user open and closing operation of a gas strut window may vary from user to user based on the individual's height, weight, reach, and overall physical capability. Pay special attention to your window height placement and the ability to reach it in the open position to close it. Window opening height/angle can be adjusted on request.

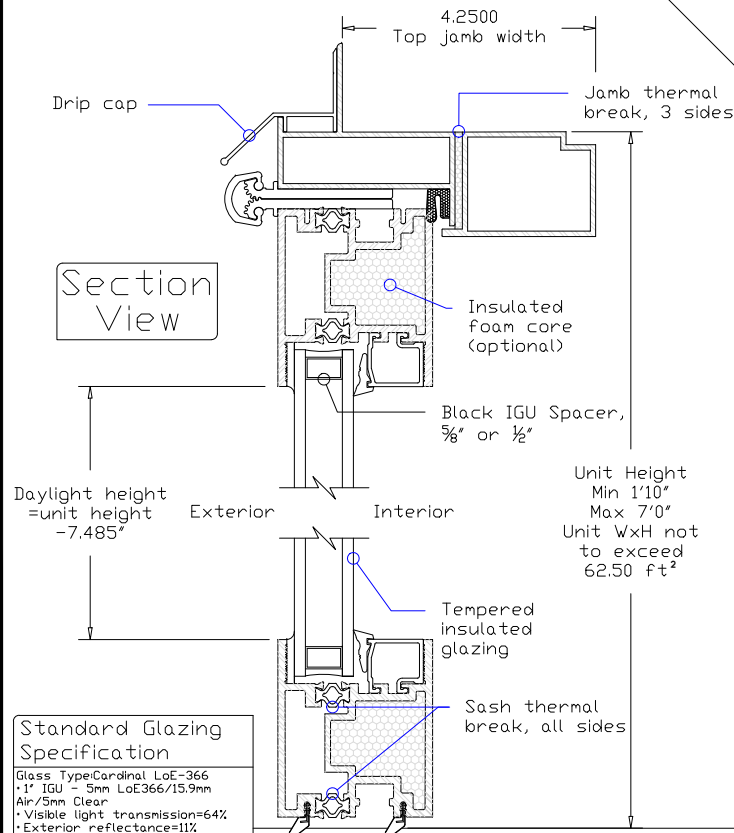
Open angle

90° Straight out

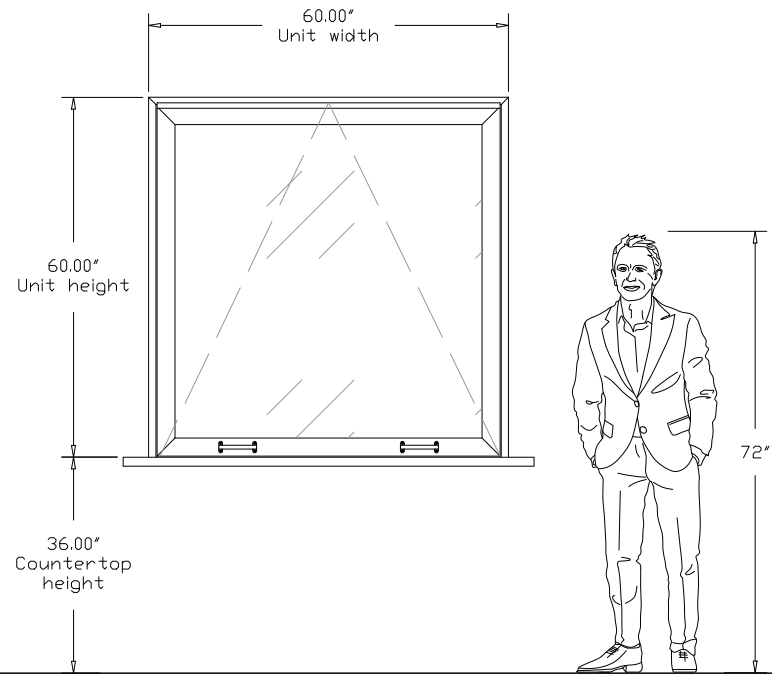
90°



Section View



Elevation



Standard Glazing Specification

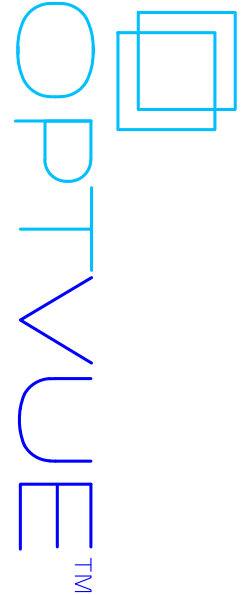
Glass Type: Cardinal LoE-366
• 1" IGU - 5mm LoE366/15.9mm Air/5mm Clear
• Visible light transmission=64%
• Exterior reflectance=11%
• Solar heat gain coefficient=0.27
• Winter U-Value=.030, <34ft²

or

Glass Type: Cardinal LoE-366
• 1" IGU - 6mm LoE366/12.7mm Air/6mm Clear
• Visible light transmission=63%
• Exterior reflectance=11%
• Solar heat gain coefficient=0.28
• Winter U-Value=.029, >34ft²

Finish counter by others. Dual Weather stripping seals to countertop, counter supplied by others should be flat and smooth for optimum operation and air/water tightness. OPTVUE recommends that the countertop should be installed prior to window installation.

General Notes



Finish Schedule

Jamb Exterior	Color
Sash Exterior	Color
Jamb Interior	Color
Sash Interior	Color
Sash core/edge	Color
Hinge Exterior	Color
Handle Exterior	Color
Handle Interior	Color
Struts Interior	Black
Strut Mount	Stainless
-	-
Strut Cover	Color
Drip Cap	Color
IGU Spacer	Black
Screen Track	N/A
Screen Mesh	N/A
Weather Strip	Black

Manufacturer Name and Address

OPTVUE
3204 PRODUCTION AVE
OCEANSIDE, CA 92058
+1(760) 760-0110

Project Name and Address

PROJECTNAME
PROJECTADDRESS1
PROJECTADDRESS2
PROJECTADDRESS3

Project	CUSTOMER	Sheet	1
Date	10/01/2023		
Scale	-		